

2307-0744 Supplementary material

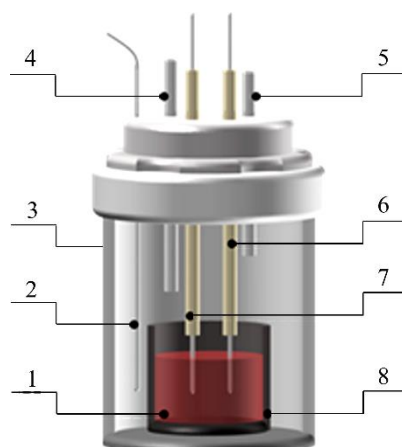


Figure S1 Schematic diagram of the experimental electrochemical apparatus (1–Molten salt; 2–Thermocouple; 3–Stainless steel crucible; 4–Air inlet; 5–Ar outlet; 6–Working electrode; 7–Reference electrode; 8–Counter electrode)

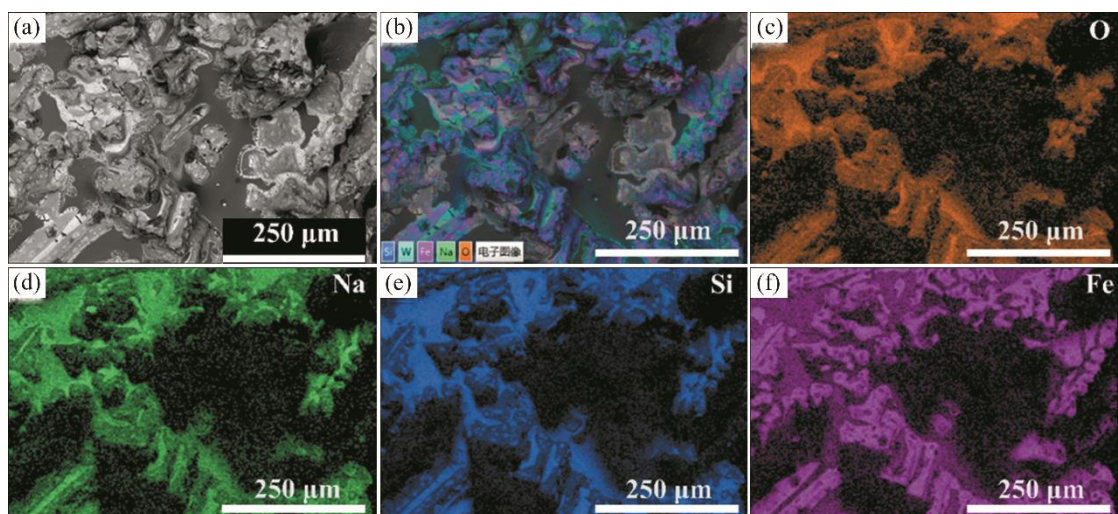


Figure S2 SEM-EDS images of the deposits obtained on a tungsten sheet by potentiostatic electrolysis at 0.857 V for 6 h in the $\text{Na}_2\text{SiO}_3\text{-SiO}_2\text{-Fe}_2\text{O}_3$ electrolyte at 1278 K

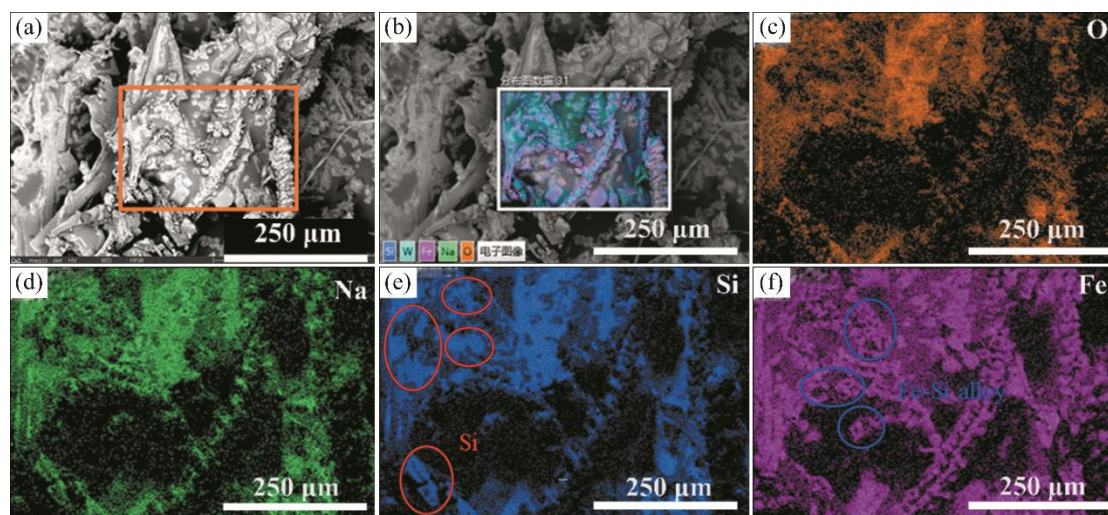


Figure S3 SEM-EDS images of the deposits obtained on a tungsten sheet by potentiostatic electrolysis at -1.457 V for 6 h in the Na_2SiO_3 - SiO_2 - Fe_2O_3 electrolyte at 1278 K